



Westfield, Frosterley, DL13 2QQ  
3 Bed - House - Terraced  
Starting Bid £95,000

**ROBINSONS**  
SALES • LETTINGS • AUCTIONS • SURVEYS

# Westfield Frosterley, DL13 2QQ

\* NO FORWARD CHAIN \*

For sale by modern auction, guide price £95,000 plus reservation fee.

Situated in the sought-after Weardale village of Frosterley, this well-presented three-bedroom mid-terrace home offers comfortable living with the added benefits of off-road parking and a private rear garden. The property features gas central heating via a combination boiler, UPVC double glazing throughout, and a rear conservatory that enhances the living space.

## Accommodation

Upon entering, you are welcomed by a hallway with staircase to the first floor. The spacious lounge includes a feature gas fire and sliding patio doors opening into the conservatory, creating a bright and versatile living area. There is also a separate dining room and a fitted kitchen with direct access to the rear garden.

Upstairs, the property boasts three generously sized bedrooms and a modern re-fitted shower room, complete with a three-piece suite and shower enclosure.

## External

To the front, a driveway provides convenient off-road parking. The enclosed rear garden is mainly laid to lawn, offering a safe and private outdoor space.

## Location

Frosterley is a picturesque Weardale village surrounded by stunning countryside and scenic walks, including those along the River Wear. The village itself offers a primary school, local shop, and welcoming country pub, while regular bus services connect to nearby towns such as Stanhope, Wolsingham, and Crook, which provide a broader range of amenities.

For further details or to arrange a viewing, please contact Robinsons.

Durham County Council Tax Band A | EPC RATING: D | FREEHOLD













#### Agent Notes

Council Tax: Durham County Council, Band A £1748.00

Tenure: Freehold

Property Construction – Standard

Number & Types of Rooms – Please refer to the details and floorplan, all measurements are for guidance only

Gas Supply - Mains

Electricity supply – Mains

Water Supply – Mains (not metered)

Sewerage – Mains

Heating – Gas Central Heating

Estimated Mobile phone coverage – Please refer to the Ofcom Website - <https://www.ofcom.org.uk>

Estimated Broadband Download speeds – please refer to the Ofcom Website – <https://www.ofcom.org.uk>

Building Safety – The Vendor is not aware of any Building Safety issues. However, we would recommend that the purchaser engages the services of a chartered surveyor to confirm.

Restrictions – covenants which affect the property are within the Land Registry Title Register which is available for inspection.

Selective licencing area – no

Probate – being applied for NA

Rights & Easements – None known, check with seller

Flood risk – refer to the Gov website - <https://www.gov.uk/check-long-term-flood-risk>

Coastal Erosion – refer to the Gov website - <https://www.gov.uk/check-coastal-erosion-management-in-your-area>

Protected Trees – check with seller

Planning Permission – Nothing in the local area to affect this property that we are aware of. Check with seller.

Accessibility/Adaptations – any alterations or conversions etc.

Mining Area – Coal Mining Reporting Area, further searches may be required by your legal representative.

Disclaimer: Our details have been compiled in good faith using publicly available sources and information obtained from the vendor prior to marketing. Verification and clarification of this information, along with any further details concerning Material Information parts A, B & C, should be sought from a legal representative or appropriate authorities before making any financial commitments. Robinsons cannot accept liability for any information provided subsequent amendments or unintentional errors or omissions.

HMRC Compliance requires all estate agents to carry out identity checks on their customers, including buyers once their offer has been accepted. These checks must be completed for each purchaser who will become a legal owner of the property. An administration fee of £30 (inc. VAT) per individual purchaser applies for carrying out these checks.

#### Modern Auction

Auctioneer Comments

This property is for sale by the Modern Method of Auction. Should you view, offer or bid on the property, your information will be shared with the Auctioneer, iamsold Limited.

This method of auction requires both parties to complete the transaction within 56 days of the draft contract for sale being received by the buyer's solicitor. This additional time allows buyers to proceed with mortgage finance.

The buyer is required to sign a reservation agreement and make payment of a non-refundable Reservation Fee. This being 4.5% of the purchase price including VAT, subject to a minimum of £6,600.00 including VAT. The Reservation Fee is paid in addition to purchase price and will be considered as part of the chargeable consideration for the property in the calculation for stamp duty liability. Buyers will be required to go through an identification verification process with iamsold and provide proof of how the purchase would be funded.

This property has a Buyer Information Pack which is a collection of documents in relation to the property. The documents may not tell you everything you need to know about the property, so you are required to complete your own due diligence before bidding. A sample copy of the Reservation Agreement and terms and conditions are also contained within this pack. The buyer will also make payment of £300 including VAT towards the preparation cost of the pack, where it has been provided by iamsold.

The property is subject to an undisclosed Reserve Price with both the Reserve Price and Starting Bid being subject to change.

Referral Arrangements

The Partner Agent and Auctioneer may recommend the services of third parties to you. Whilst these services are recommended as it is believed they will be of benefit; you are under no obligation to use any of these services and you should always consider your options before services are accepted. Where services are accepted the Auctioneer or Partner Agent may receive payment for the recommendation and you will be informed of any referral arrangement and payment prior to any services being taken by you.

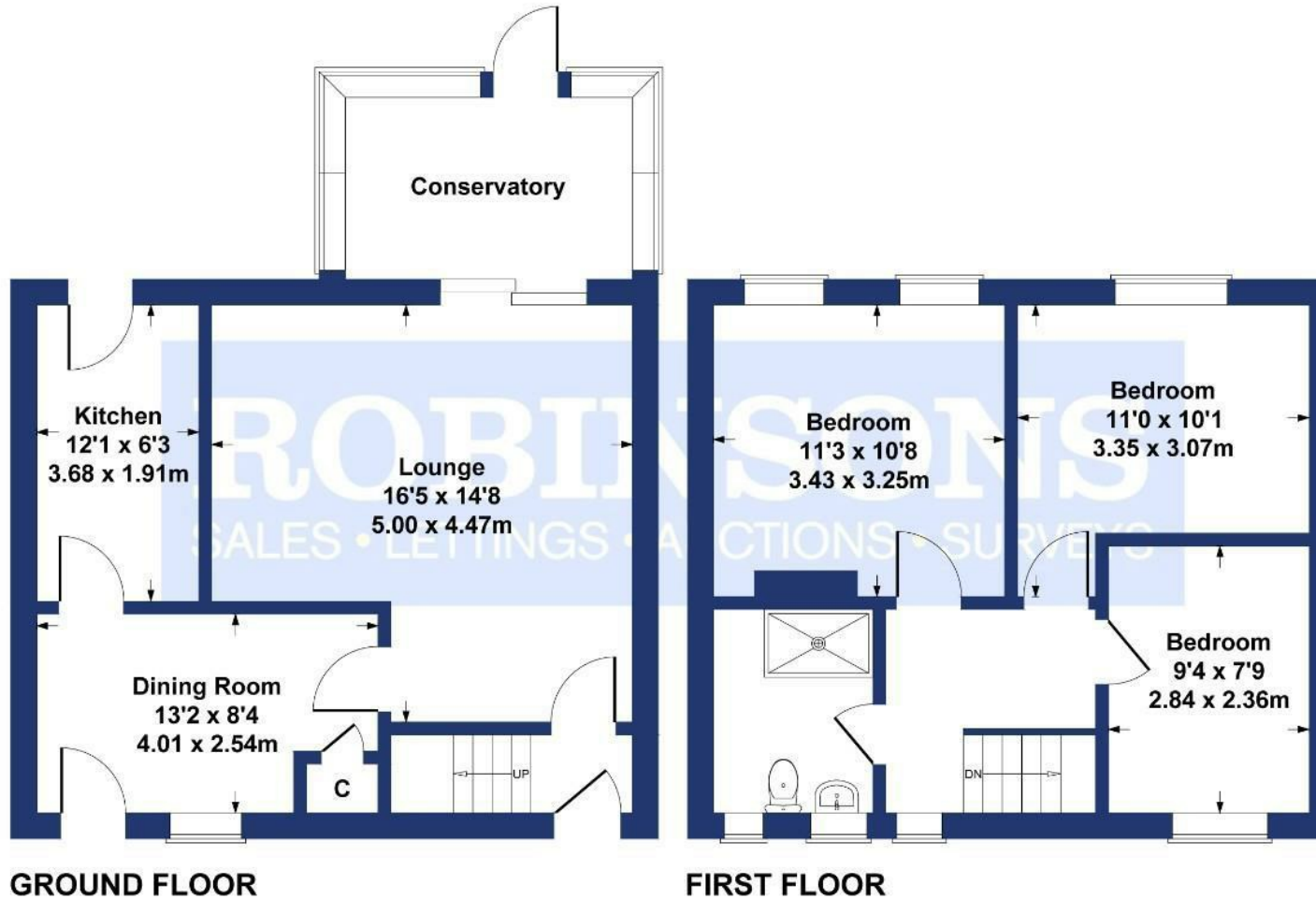




# Westfield, Frosterley

Approximate Gross Internal Area  
990 sq ft - 92 sq m

Energy Efficiency Rating		Current	Potential
Very energy efficient - lower running costs			
(82 plus)	A		
(61-81)	B		
(49-60)	C		
(35-48)	D	64	78
(29-34)	E		
(21-28)	F		
(1-20)	G		
Not energy efficient - higher running costs			
England & Wales		EU Directive 2002/91/EC	



### SKETCH PLAN FOR ILLUSTRATIVE PURPOSES ONLY

All measurements walls, doors, windows, fittings and appliances, their sizes and locations, are approximate only. They cannot be regarded as being a representation by the seller, nor their agent.

Produced by Potterplans Ltd. 2023

For clarification we wish to inform prospective purchasers that we have prepared these sales particulars as a general guide. We have not carried out a detailed survey, nor tested the services, appliances and specific fittings. Room sizes should not be relied upon for carpets and furnishings, if there are important matters which are likely to affect your decision to buy, please contact us before viewing the property. Robinsons can recommend financial services, surveying and conveyancing services to sellers and buyers. Robinsons staff may benefit from referral incentives relating to these services.

Royal Corner, Crook, County Durham, DL15 9UA  
Tel: 01388763477  
info@robinsonscrook.co.uk  
www.robinsonsestateagents.co.uk

